

PCB Power Relays

Miniature PCB Relay PE

1 pole 5 A

- 1 C/O
- Cadmium-free contacts
- Sensitive coil 200 mW
- 4 kV coil-contact
- Low height 10.0 mm

Miniature PCB Relay PE bistable

1 pole 5 A
polarized bistable version

- 1 C/O
- Bistable with 1 coil
- 4 kV coil-contact
- Low height 10.0 mm

Miniature PCB Relay RE

1 pole 6 A

- 1 N/O
- Sensitive coil 200 mW
- 4 kV coil-contact
- Optimized height 10.6 mm
- PCB area 200 mm²
- Wash tight



Contacts

| |
|-------------------|
| Configuration |
| Rated current |
| Rated voltage |
| Breaking capacity |

| |
|---------|
| 1 C/O |
| 5 A |
| 250 Vac |
| 1250 VA |

| |
|---------|
| 1 C/O |
| 5 A |
| 250 Vac |
| 1250 VA |

| |
|---------|
| 1 N/O |
| 6 A |
| 250 Vac |
| 1500 VA |

Coil

| |
|---------------------|
| Nominal voltage |
| Nominal coil power |
| Other coil versions |

| |
|------------|
| 5...48 Vdc |
| 200 mW |
| - |

| |
|------------|
| 3...48 Vdc |
| 360 mW |
| - |

| |
|------------|
| 5...48 Vdc |
| 200 mW |
| - |

Insulation

| |
|----------------------|
| Dielectric strength |
| Clearance / creepage |

| |
|-----------------------|
| 4000 V _{rms} |
| 3.2 / 4 mm |

| |
|-----------------------|
| 4000 V _{rms} |
| 3.2 / 4 mm |

| |
|-----------------------|
| 4000 V _{rms} |
| 4 / 4 mm |

General data

| |
|--------------------------|
| Ambient temperature max. |
| Standard versions |
| Terminals |
| Dimensions l x w x h |

| |
|------------------------|
| +85 °C |
| flux proof, wash tight |
| PCB |
| 20 x 10 x 10 mm |

| |
|------------------------|
| +70 °C |
| flux proof, wash tight |
| PCB |
| 20 x 10 x 10 mm |

| |
|-------------------|
| +70 °C |
| wash tight |
| PCB |
| 20 x 10 x 10.6 mm |



PCB Power Relays

Slim PCB Relay SNR

1 pole 6 A

- 1 C/O or 1 N/O
- Only 5 mm wide
- Cadmium-free contacts
- Sensitive coil 170 mW
- 4 kV coil-contact
- 6/8 mm creepage/clearance
- Protection class II



Miniature Power PCB Pealy RY II

1 pole 8 A

- 1 C/O or 1 N/O or 1 N/C
- 5 kV / 8 mm coil-contact
- Protection class II (VDE 0700)
- Low height 12.3 mm
- Pinnings: 3.2 and 5 mm
- Sockets with PCB-type or screw-type terminals



Power PCB Relay RT1

1 pole 12 A / 16 A
DC- or AC-coil

- 1 C/O or 1 N/O
- Sensitive coil 400 mW, 0.75 VA
- 5 kV/10 mm coil-contact
- Protection class II
- Ambient temperature 85 °C (DC-coil)
- Height 15.7 mm



Power PCB Relay RT1 bistable

1 pole 16 A
polarized bistable version

- 1 C/O
- Bistable with 1 or 2 coils
- 5 kV/10 mm coil-contact
- Height 15.7 mm
- Cadmium-free contacts
- Protection class II (VDE 0700)



| |
|----------------|
| 1 C/O or 1 N/O |
| 6 A |
| 250 Vac |
| 1500 VA |

| |
|------------|
| 5...48 Vdc |
| 170 mW |
| - |

| |
|-----------------------|
| 4000 V _{rms} |
| 6 / 8 mm |

| |
|----------------|
| +85 °C |
| wash tight |
| PCB |
| 28 x 5 x 15 mm |

| |
|-------------------------|
| 1 C/O or 1 N/O or 1 N/C |
| 8 A |
| 250 Vac |
| 2000 VA |

| |
|------------|
| 5...48 Vdc |
| 220 mW |
| - |

| |
|-----------------------|
| 5000 V _{rms} |
| 8 / 8 mm |

| |
|------------------------|
| +85 °C |
| flux proof, wash tight |
| PCB |
| 28.5 x 10.1 x 12.3 mm |

| |
|----------------------|
| 1 C/O or 1 N/O |
| 12 A 16 A |
| 250 Vac |
| 3000 VA 4000 VA |

| |
|-------------------------------|
| 5...110 Vdc 24...230 Vac |
| 400 mW 0.75 VA |
| - |

| |
|-----------------------|
| 5000 V _{rms} |
| 10 / 10 mm |

| |
|----------------------------|
| DC: +85 °C AC: +70 °C |
| flux proof, wash tight |
| PCB |
| 29 x 12.7 x 15.7 mm |

| |
|---------|
| 1 C/O |
| 16 A |
| 250 Vac |
| 4000 VA |

| |
|--------------|
| 5...24 Vdc |
| 400 / 600 mW |
| - |

| |
|-----------------------|
| 5000 V _{rms} |
| 10 / 10 mm |

| |
|---------------------|
| +85 °C |
| flux proof |
| PCB |
| 29 x 12.7 x 15.7 mm |



PCB Power Relays

Power PCB Relay RT1 sensitive

1 pole 10 A,
highly sensitive version

- 1 C/O or 1 N/O
- Sensitive coil 250 mW
- 5 kV / 10 mm coil-contact
- Protection class II (VDE 0700)
- Ambient temperature 85 °C at rated load
- Height 15.7 mm



Power PCB Relay RT1 Inrush

1 pole 16 A, for inrush peak
currents up to 80 A

- 1 N/O
- Sensitive coil 400 mW
- 5 kV / 10 mm coil-contact
- Protection class II (VDE 0700)
- Ambient temperature 85 °C
- Height 15.7 mm



Power PCB Relay RTH 105 °C sensitive

1 pole 10 A,
high-temperature version

- 1 N/O
- Sensitive coil 250 mW
- 5 kV / 10 mm coil-contact
- Protection class II (VDE 0700)
- Ambient temperature 105 °C at rated load
- Height 15.7 mm



Contacts

| | |
|-------------------|----------------|
| Configuration | 1 C/O or 1 N/O |
| Rated current | 10 A |
| Rated voltage | 250 Vac |
| Breaking capacity | 2500 VA |

Coil

| | |
|---------------------|------------|
| Nominal voltage | 5...60 Vdc |
| Nominal coil power | 250 mW |
| Other coil versions | - |

Insulation

| | |
|----------------------|-----------------------|
| Dielectric strength | 5000 V _{rms} |
| Clearance / creepage | 10 / 10 mm |

General data

| | |
|--------------------------|------------------------|
| Ambient temperature max. | +85 °C |
| Standard versions | flux proof, wash tight |
| Terminals | PCB |
| Dimensions l x w x h | 29 x 12.7 x 15.7 mm |

| | |
|-------------------|---------|
| Configuration | 1 N/O |
| Rated current | 16 A |
| Rated voltage | 250 Vac |
| Breaking capacity | 4000 VA |

| | |
|---------------------|-------------|
| Nominal voltage | 5...110 Vdc |
| Nominal coil power | 400 mW |
| Other coil versions | - |

| | |
|----------------------|-----------------------|
| Dielectric strength | 5000 V _{rms} |
| Clearance / creepage | 10 / 10 mm |

| | |
|--------------------------|---------------------|
| Ambient temperature max. | +85 °C |
| Standard versions | flux proof |
| Terminals | PCB |
| Dimensions l x w x h | 29 x 12.7 x 15.7 mm |

| | |
|-------------------|---------|
| Configuration | 1 N/O |
| Rated current | 10 A |
| Rated voltage | 250 Vac |
| Breaking capacity | 2500 VA |

| | |
|---------------------|------------|
| Nominal voltage | 5...60 Vdc |
| Nominal coil power | 250 mW |
| Other coil versions | - |

| | |
|----------------------|-----------------------|
| Dielectric strength | 5000 V _{rms} |
| Clearance / creepage | 10 / 10 mm |

| | |
|--------------------------|---------------------|
| Ambient temperature max. | +105 °C |
| Standard versions | flux proof |
| Terminals | PCB |
| Dimensions l x w x h | 29 x 12.7 x 15.7 mm |



PCB Power Relays

Power PCB Relay RTH 105°C 16 A

1 pole 16 A
high-temperature version

- 1 C/O or 1 N/O
- 16 A rated current
- 5 kV / 10 mm coil-contact
- Protection class II VDA /0700)
- Ambient temperature 105 °C at rated load
- Height 15.7 mm



| |
|-----------------------|
| 1 C/O or 1 N/O |
| 16 A |
| 250 Vac |
| 4000 VA |
| 5...60 Vdc |
| 400 mW |
| - |
| 5000 V _{rms} |
| 10 / 10 mm |
| +105 °C |
| flux proof |
| PCB |
| 29 x 12.7 x 15.7 mm |

Power PCB Relay RP II/1

1 pole 8 / 12 / 16 A

- 1 C/O or 1 N/O
- 4 kV / 8 mm coil-contact
- Pinning 3.5 or 5 mm (8 / 12 A) and 5 mm (16 A)
- PCB-sockets



| |
|-------------------------|
| 1 C/O or 1 N/O |
| 8 A 12A 16A |
| 250 Vac |
| 2000 VA 3000 VA 4000 VA |
| 5...110 Vdc |
| 500 mW |
| - |
| 4000 V _{rms} |
| 8 / 8 mm |
| +70 °C |
| flux proof, wash tight |
| PCB |
| 29 x 12.6 x 25.5 mm |

Special Load PCB Relay RP 3 SL

1 pole 16 A, for high inrush currents, mono- or bistable

- 1 N/O
- 120 A / 20 ms inrush peak current
- DC- or bistable version
- 4 kV / 8 mm coil-contact



| |
|------------------------|
| 1 N/O |
| 16 A |
| 250 Vac |
| 4000 VA |
| 5...110 Vdc |
| 500 mW |
| bistable |
| 4000 V _{rms} |
| 8 / 8 mm |
| +70 °C |
| flux proof, wash tight |
| PCB |
| 29 x 12.6 x 25.5 mm |

Faston Power Relay RPH

1 pole 16 A

- 1 N/O or 1 N/C
- Insulation to VDE 0631 and VDE 0700
- Ambient temperature up to 125 °C
- Faston-terminals



| |
|-----------------------|
| 1 N/O or 1 N/C |
| 16 A |
| 250 Vac |
| 4000 VA |
| 6...48 Vdc |
| 360 mW |
| - |
| 4000 V _{rms} |
| 8 / 8 mm |
| +125 °C |
| flux proof |
| PCB |
| 29 x 13.2 x 29 mm |



PCB Power Relays

Power PCB Relay RP I

1 pole 8 A

- 1 C/O or 1 N/O
- 4 kV coil-contact
- Vertical and horizontal version
- Version with twin contacts
- Wash tight

Power PCB Relay RT2

2 pole 8 A
DC and AC-coil

- 2 C/O or 2 N/O
- Sensitive coil 400 mW
- DC- or AC-coil
- 5 kV / 10 mm coil-contact
- Protection class II (VDE 0700)
- Height 15.7 mm

Power PCB Relay RT2 bistable

2 pole 8 A
polarized bistable version

- 2 C/O
- Bistable with 1 or 2 coils
- 5 kV / 10 mm coil-contact
- Height 15.7 mm
- Cadmium-free contacts
- Protection class II (VDE 0700)



Contacts

| | | | |
|-------------------|----------------|----------------|---------|
| Configuration | 1 C/O or 1 N/O | 2 C/O or 2 N/O | 2 C/O |
| Rated current | 8 A | 8 A | 8 A |
| Rated voltage | 250 Vac | 250 Vac | 250 Vac |
| Breaking capacity | 2000 VA | 2000 VA | 2000 VA |

Coil

| | | | |
|---------------------|--------------|-----------------------------|--------------|
| Nominal voltage | 6...60 Vdc | 5...110 Vdc 24...230 Vac | 5...24 Vdc |
| Nominal coil power | 450...500 mW | 400 mW 0,75 VA | 400 / 600 mW |
| Other coil versions | - | - | - |

Insulation

| | | | |
|----------------------|-----------------------|-----------------------|-----------------------|
| Dielectric strength | 4000 V _{rms} | 5000 V _{rms} | 5000 V _{rms} |
| Clearance / creepage | 4 / 4 mm | 10 / 10 mm | 10 / 10 mm |

General data

| | | | |
|--------------------------|---------------------|------------------------|---------------------|
| Ambient temperature max. | +70 °C | +70 °C | +85 °C (UL: 70 °C) |
| Standard versions | wash tight | flux proof, wash tight | flux proof |
| Terminals | PCB | PCB | PCB |
| Dimensions l x w x h | 28 x 10.4 x 25.1 mm | 29 x 12.7 x 15.7 mm | 29 x 12.7 x 15.7 mm |



PCB Power Relays

Power PCB Relay RP II/2

2 pole 8 A

- 2 C/O or 2 N/O
- 4 kV / 8 mm coil-contact
- Twin contacts available
- PCB-sockets



Miniature Power PCB Relay PB

1 pole 10 A

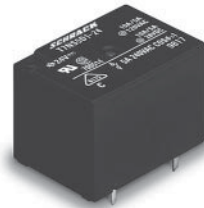
- 1 C/O or 1 N/O contact
- Environmentally-friendly cadmium-free contacts
- Creepage / clearance to VDE 0435 and VDE 0700
- Class F coil available



Miniatur Power PCB Relay ZN

1 pole 10 A

- 1 C/O or 1 N/O
- Coil version 360 mW or 450 mW
- Ambient temperature up to 85 °C
- Creepage- / clearance to VDE 0435 and VDE 0700
- Sensitive 360 mW coil available



Power Relay ZD

1 pole 30 A

- 1 N/O or 1 C/O
- High breaking capacity 7500 VA
- PCB- and Faston connections and chassis mount version
- UL-class F as standard
- Ambient temperature 85 °C
- Open version available



| |
|----------------|
| 2 C/O or 2 N/O |
| 8 A |
| 250 Vac |
| 2000 VA |

| |
|-------------|
| 5...110 Vdc |
| 500 mW |
| - |

| |
|-----------------------|
| 4000 V _{rms} |
| 8 / 8 mm |

| |
|------------------------|
| +70 °C |
| flux proof, wash tight |
| PCB |
| 29 x 12.6 x 25.5 mm |

| |
|----------------|
| 1 C/O or 1 N/O |
| 10 A |
| 250 Vac |
| 2500 VA |

| |
|------------------|
| 5, 6, 12, 24 Vdc |
| 360 mW |
| - |

| |
|-----------------------|
| 2500 V _{rms} |
| 3 / 4 mm |

| |
|-----------------|
| +85 °C |
| flux proof |
| PCB |
| 15 x 15 x 20 mm |

| |
|----------------|
| 1 C/O or 1 N/O |
| 10 A |
| 250 Vac |
| 2500 VA |

| |
|------------|
| 6...48 Vdc |
| 360 mW |
| - |

| |
|-----------------------|
| 2000 V _{rms} |
| 2 / 3 mm |

| |
|-----------------------|
| +85 °C |
| wash tight |
| PCB |
| 22.5 x 16.5 x 16.9 mm |

| | |
|-------------------|---------|
| 1 C/O | 1 N/O |
| 20(N/O)/10(N/C) A | 30 A |
| 250 Vac | |
| 4800 VA | 7200 VA |

| |
|------------|
| 6...48 Vdc |
| 1 W |
| - |

| |
|-----------------------|
| 2500 V _{rms} |
| 3.1 / 6.3 mm |

| |
|-----------------------|
| +85 °C |
| wash tight |
| PCB, Faston |
| 32.3 x 27.4 x 20.4 mm |



Safety Relays

Safety Relay SR2

2 pole 6 A

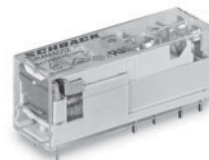
- Relay with forcibly guided contacts according to EN 50205
- 1 N/O + 1 N/C or 2 C/O
- 6 kV surge resistance between poles



Safety Relay SR4

4 pole 8 A

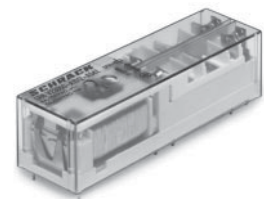
- Relay with forcibly guided contacts according to EN 50205
- 2 N/O + 2 N/C or 3 N/O + 1 N/C
- Small size



Safety Relay SR6 D/M

4 pole 8 A

- Relay with forcibly guided contacts according to EN 50205
- 2 N/O + 2 N/C or 3 N/O + 1 N/C
- High insulation distances for safe separation of electrical circuits



Contacts

| | | | |
|-------------------|------------------------|----------------------------|--------------------------|
| Configuration | 1 N/O + 1 N/C or 2 C/O | 2N/O + 2N/C or 3N/O + 1N/C | 2N/O + 2N/C, 3N/O + 1N/C |
| Rated current | 6 A | 8 A | 8 A |
| Rated voltage | 250 Vac | 250 Vac | 250 Vac |
| Breaking capacity | 1500 VA | 2000 VA | 2000 VA |

Coil

| | | | |
|---------------------|-------------|-------------|-------------|
| Nominal voltage | 5...110 Vdc | 5...110 Vdc | 5...110 Vdc |
| Nominal coil power | 700 mW | 800 mW | 1200 mW |
| Other coil versions | - | - | - |

Insulation

| | | | |
|-----------------------------------|--------------|------------|----------------------------|
| Clearance / creepage coil-contact | 8 / 8 mm | 10 / 10 mm | 5.5 / 5.5 mm |
| Clearance / creepage cont.-cont. | 5.5 / 5.5 mm | 3 / 3.5 mm | 5.5 / 5.5 mm or 12 / 12 mm |

General data

| | | | |
|--------------------------|---------------------|-----------------|-------------------|
| Ambient temperature max. | +70 °C | +70 °C | +70 °C |
| Standard versions | wash tight | wash tight | wash tight |
| Terminals | PCB | PCB | PCB |
| Dimensions l x w x h | 29 x 12.6 x 25.5 mm | 40 x 13 x 16 mm | 55 x 16.5 x 16 mm |

in preparation

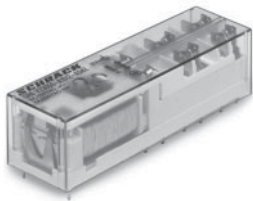


Safety Relays

Safety Relay SR6

6 pole 8 A

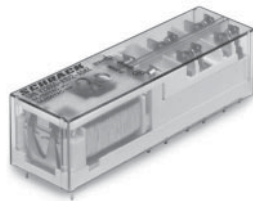
- Relay with forcibly guided contacts according to EN 50205
- Small size
- 4 N/O + 2 N/C, 3 N/O + 3 N/C, 5 N/O + 1 N/C



Safety Relay SR6 sensitive

6 pole 8 A

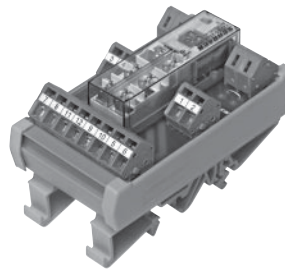
- Relay with forcibly guided contacts according to EN 50205
- polarized with 800 mW coil power consumption
- Small size
- 4 N/O + 2 N/C, 3 N/O + 3 N/C, 5 N/O + 1 N/C



Safety Relay SR6Z

6 pole 8 A

- SR6 on printed circuit board
- 4 N/O + 2 N/C, 3 N/O + 3 N/C, 5 N/O + 1 N/C
- AC/DC input
- Spring connectors
- Module with 46 mm



| |
|---------------------------------------|
| 4N/O + 2N/C, 3N/O + 3N/C, 5N/O + 1N/C |
| 8 A |
| 250 Vac |
| 2000 VA |

| |
|-------------|
| 5...110 Vdc |
| 1200 mW |
| - |

| |
|--------------|
| 5.5 / 5.5 mm |
| 5.5 / 5.5 mm |

| |
|-------------------|
| +70 °C |
| wash tight |
| PCB |
| 55 x 16.5 x 16 mm |

| |
|---------------------------------------|
| 4N/O + 2N/C, 3N/O + 3N/C, 5N/O + 1N/C |
| 8 A |
| 250 Vac |
| 2000 VA |

| |
|------------|
| 5...48 Vdc |
| 800 mW |
| - |

| |
|--------------|
| 5.5 / 5.5 mm |
| 5.5 / 5.5 mm |

| |
|-------------------|
| +70 °C |
| wash tight |
| PCB |
| 55 x 16.5 x 16 mm |

| |
|---------------------------------------|
| 4N/O + 2N/C, 3N/O + 3N/C, 5N/O + 1N/C |
| 8 A |
| 250 Vac |
| 2000 VA |

| |
|---------------------------|
| 12...115 Vdc/Vac, 230 Vac |
| 1200 mW |
| - |

| |
|--------------|
| 5.5 / 5.5 mm |
| 3 / 3 mm |

| |
|----------------------------|
| +50 °C |
| - |
| spring connector terminals |
| 87 x 46 mm |



Industrial Relays

Miniature Relay PT

2 / 3 / 4 pole 12 / 10 / 6 A,
DC- or AC-coil

- 2, 3 or 4 C/O
- Switching performance up to 3000 VA
- Low height 29 mm
- Cadmium-free contacts
- Mechanical and electrical indicator
- Manual test tab, optionally lockable



Multimode Relay MT

2 / 3 pole 10 A,
DC- or AC-coil

- 2 C/O or 3 C/O
- Cadmium-free contacts
- Mechanical indicator as standard and electrical indicator
- New front operated test system



Power Relay RM 2/3/7

2 / 3 pole 10 / 16 A,
DC- or AC-coil

- 2 C/O or 3 C/O
- Switching capacity up to 6000 VA
- Mechanical indicator
- Push-to-test-button
- Plug-in version, PCB terminals, chassis- or DIN-rail mount



Contacts

| | | | |
|-------------------|---------|---------|---------|
| Configuration | 2 C/O | 3 C/O | 4 C/O |
| Rated current | 12 A | 10 A | 6 A |
| Rated voltage | 250 Vac | | |
| Breaking capacity | 3000 VA | 2500 VA | 1500 VA |

Coil

| | | |
|---------------------|-------------|-------------|
| Nominal voltage | 6...220 Vdc | 6...230 Vac |
| Nominal coil power | 0.75 W | 1.0 VA |
| Other coil versions | - | |

Insulation

| | | | |
|----------------------|-----------------------|----------|----------|
| Dielectric strength | 2500 V _{rms} | | |
| Clearance / creepage | 3/4 mm | 2.6/4 mm | 1.8/3 mm |

General data

| | | | |
|--------------------------|------------------------|--|--|
| Ambient temperature max. | +70 °C | | |
| Standard versions | dust-proof, flux proof | | |
| Terminals | plug-in, PCB | | |
| Dimensions l x w x h | 28 x 22.5 x 29 mm | | |

| | |
|-------------------|----------------|
| Configuration | 2 C/O or 3 C/O |
| Rated current | 10 A |
| Rated voltage | 250 Vac |
| Breaking capacity | 2500 VA |

| | | |
|---------------------|-------------|-------------|
| Nominal voltage | 6...220 Vdc | 6...230 Vac |
| Nominal coil power | 1.2 W | 2.3 VA |
| Other coil versions | - | |

| | | |
|----------------------|-----------------------|--|
| Dielectric strength | 2500 V _{rms} | |
| Clearance / creepage | 2.8 / 4 mm | |

| | | |
|--------------------------|---------------------|------------|
| Ambient temperature max. | DC: +60 °C | AC: +50 °C |
| Standard versions | dust-proof | |
| Terminals | plug-in | |
| Dimensions l x w x h | 35.5 x 35.5 x 57 mm | |

| | | | |
|-------------------|---------|---------|---------|
| Configuration | 2 C/O | 3 C/O | 3 C/O |
| Rated current | 16 A | 10 A | 16 A |
| Rated voltage | 380 Vac | | |
| Breaking capacity | 6000 VA | 3800 VA | 6000 VA |

| | | |
|---------------------|-------------|--------------|
| Nominal voltage | 6...220 Vdc | 6...400 Vac |
| Nominal coil power | 1.2...1.6 W | 2.3...2.8 VA |
| Other coil versions | - | |

| | | |
|----------------------|-----------------------|--|
| Dielectric strength | 2500 V _{rms} | |
| Clearance / creepage | 3.5 / 6 mm | |

| | | |
|--------------------------|-----------------------|---------------|
| Ambient temperature max. | DC: +60/70 °C | AC: +50/55 °C |
| Standard versions | dust-proof | |
| Terminals | plug-in, PCB | |
| Dimensions l x w x h | 38.5 x 35.5 x 48.5 mm | |



Industrial Relays

Power Relay RM 5/6

2 / 3 pole 10 / 16 A,
DC- or AC-coil

- 2 N/O or 3 N/O
- 3 mm contact gap
- Push-to-test-button
- Plug-in version, PCB terminals, chassis- or DIN-rail mount



| | |
|---------|---------|
| 2 N/O | 3 N/O |
| 16 A | 10 A |
| 280 Vac | |
| 6000 VA | 3800 VA |

| | |
|-------------|-------------|
| 6...220 Vdc | 6...400 Vac |
| 1.6 W | 2.8 VA |
| - | |

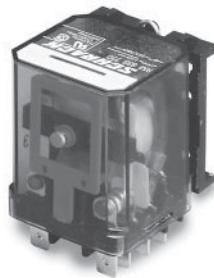
| | |
|-----------------------|--|
| 2500 V _{rms} | |
| 3.5 / 6 mm | |

| | |
|-----------------------|------------|
| DC: +60 °C | AC: +50 °C |
| dust-proof | |
| plug-in, PCB | |
| 38.5 x 35.5 x 48.5 mm | |

Power Relay RM 8

2 pole 25 A, DC- or AC-coil

- 2 C/O
- Mechanical indicator
- Push-to-test-button
- Chassis- or DIN-rail mount



| | |
|---------|--|
| 2 C/O | |
| 25 A | |
| 250 Vac | |
| 6000 VA | |

| | |
|-------------|-------------|
| 6...220 Vdc | 6...400 Vac |
| 1.2 W | 2.8 VA |
| - | |

| | |
|-----------------------|--|
| 2500 V _{rms} | |
| 2.8 / 4 mm | |

| | |
|-----------------------|------------|
| DC: +65 °C | AC: +40 °C |
| dust-proof | |
| Faston | |
| 38.5 x 35.5 x 48.5 mm | |

Power Relay RMC/RMD

1 pole 30 A, DC- or AC-coil

- 1 N/O or 1 N/O + 1 N/C
- Switching capacity up to 7200 VA
- Push-to-test-button
- Chassis mount



| | |
|---------------|-------|
| 1 N/O + 1 N/C | 1 N/O |
| 30 A | |
| 250 Vac | |
| 7500 VA | |

| | |
|-------------|-------------|
| 6...220 Vdc | 6...400 Vac |
| 1.2 W | 2.8 VA |
| - | |

| | |
|-----------------------|--|
| 2500 V _{rms} | |
| 2.8 / 4 mm | |

| | |
|-----------------------|------------|
| DC: +60 °C | AC: +40 °C |
| dust-proof | |
| Faston | |
| 38.5 x 35.5 x 48.5 mm | |

