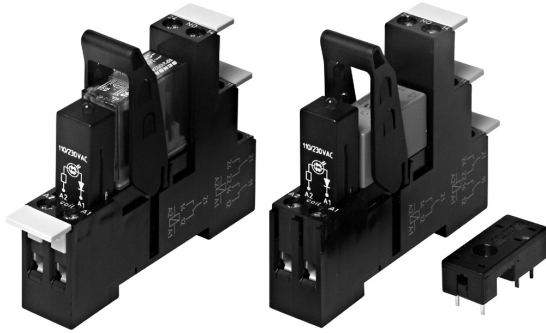


Accessories Industrial Power Relay RT / RP / SR2

and similar design: pinning 3.5mm / 5mm; relay heights 15.7 / 25.5mm



F0228-A

Features

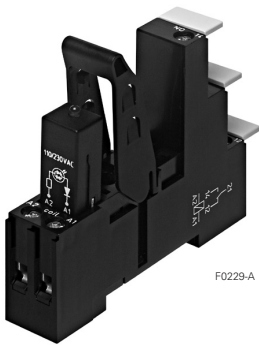
- New retainer clip with ejection function
- Easy replacement of relays on a densely packed DIN rail
- High quality rising clamp terminals
- Captive combination terminal screws
- No reduction of protection class or creepage/clearance with plastic retainer
- Simple plug-in indicator- and protection modules
- White snap-on tags
- Not suitable for bistable relays with 2 coils

Accessories for sockets:

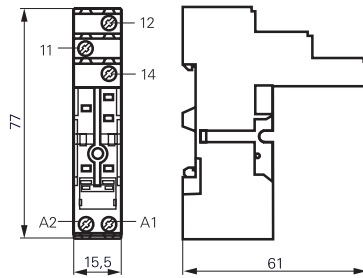
- Rejector
- LED- and protection modules
- Marking tags

Dimensions in mm

Socket with screw-type terminals for DIN rail mounting



F0229-A



S0416-AA

YRT 78 624 Socket with screw-type terminals, pinning 3.5 mm for DIN rail mounting

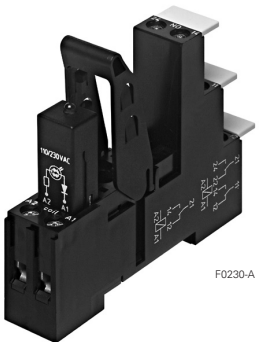


Technical data

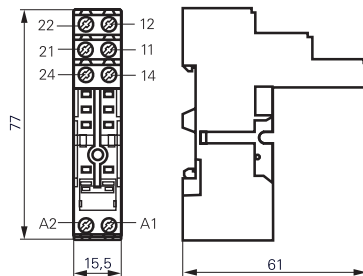
Rated current	12 A
Rated voltage	250 Vac
Insulation cat. (VDE 0110b)	C / 250 Vac
Ambient temperature	-25...85 °C
Protection category	IP 20
Wire cross section	2 x 2.5 mm ²
with bootlace crimp	2 x 1.5 mm ²
Terminal torque	0.5 Nm
max.	0.7 Nm
Packaging unit	10 pcs.

YRT 78 624 and YRT 78 626

- Logical setup of connections (input / output)
- Safe separation to VDE 0106



F0230-A



S0416-AB

YRT 78 626 Socket with screw-type terminals, pinning 5 mm for DIN rail mounting



Technical data

Rated current	1 pole	12 A *)
	2 pole	2 x 12 A
Rated voltage	250 Vac	
Insulation cat. (VDE 0110b)	C / 250 Vac	
Ambient temperature	-25...85 °C	
Protection category	IP 20	
Wire cross section	2 x 2.5 mm ²	
with bootlace crimp	2 x 1.5 mm ²	
Terminal torque	0.5 Nm	
max.	0.7 Nm	
Packaging unit	10 pcs.	

*) For 1 pole relays (16 A) the relay terminals

11-21, 12-22 and 14-24 have to be bridged

For 1 pole relays (12 A) the relay terminals 11-12-14 have to be connected to the socket terminals 21-12-24

Socket with screw-type terminals for DIN rail mounting

Type

YRT 78 624 Socket with screw-type terminals, pinning 3.5 mm for DIN rail mounting

YRT 78 626 Socket with screw-type terminals, pinning 5 mm for DIN rail mounting

Relays

Accessories Industrial Power Relay RT / RP / SR2

and similar design: pinnings 3.5mm / 5mm; relay heights 15.7 / 25.5mm

Accessories for YRT 78 724, YRT 78 726

Type	
YRT 16 016	Plastic retaining clip, relay height 15.7 and 25.5 mm
YRT 16 040	Marking tag

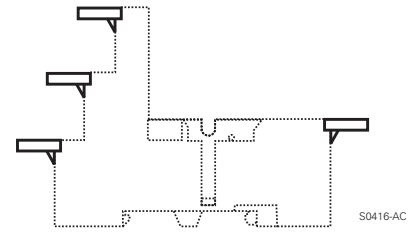
LED- and Protection Modules for YRT 78 724, YRT 78 726

Easy insertion of module into the socket

Wiring in parallel to the coil

Type	
YMFDG 230	Protection diode (A1+, A2-), 6/230 VDC
YMRCW 024	RC-network 6...60 Vac
YMRCW 230	RC-network 110...230 Vac
YMVAW 024	Varistor 24 Vac
YMVAW 230	Varistor 230 Vac

LED red	LED green	
YMLRA 024	YMLGA 024	LED 6...24 Vdc/Vac
YMLRD 024-A	YMLGD 024	LED 6...24 Vdc w. prot.diode (A1+, A2-)
YMLRD 024		LED 6...24 Vdc w. prot. diode (A1-, A2+)
YMLRW 230	YMLGW 230	LED 110...230 Vac



Marking tags

- White marking area 15.5 x 6 mm
- Snaps on socket in up to 4 positions

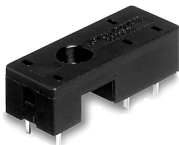


F0231-A

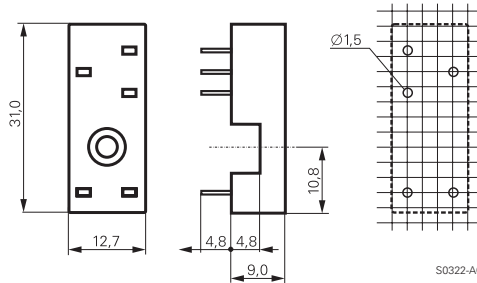


F0232-A

Socket with PCB terminals



F0116-A



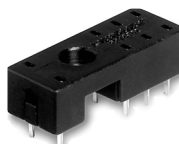
S0322-AC

RP 78 601 Socket with PCB terminals, pinning 3.5 mm

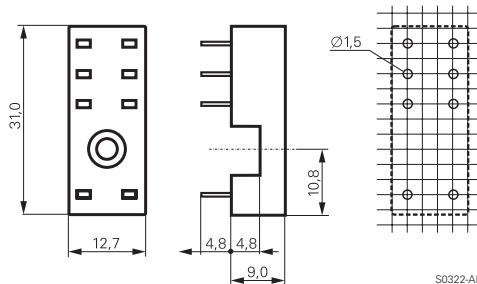


Technical data

Rated current	12 A
Rated voltage	300 Vac
Dielectric strength coil/cont.	>5000 V _{rms}
Insulation cat. (VDE 0110b)	C / 250 Vac
Ambient temperature	-40...+80 °C
Packaging unit	100 pcs.



F0117-A



S0322-AD

RP 78 602 Socket with PCB terminals, pinning 5 mm



Technical data

Rated current	1 pole	12 A
	2 pole	2 x 12 A
Rated voltage		300 Vac
Dielectric strength coil/cont.		>5000 V _{rms}
Insulation cat. (VDE 0110b)		C / 250 Vac
Ambient temperature		-40...+80 °C
Packaging unit		100 pcs.

Socket with PCB terminals

Type	
RP 78 601	Socket with PCB terminals, pinning 3.5 mm
RP 78 602	Socket with PCB terminals, pinning 5 mm

Accessories for RP 78 601, RP 78 602

Type	
RT 16 041	Plastic retaining clip RT, relay height 15.7 mm
RP 16 100	Plastic retaining clip RP, relay height 25.5 mm
RT 28 516	Metal retaining clip RT, relay height 15.7 mm
RP 28 500	Metal retaining clip RP, relay height 25.5 mm