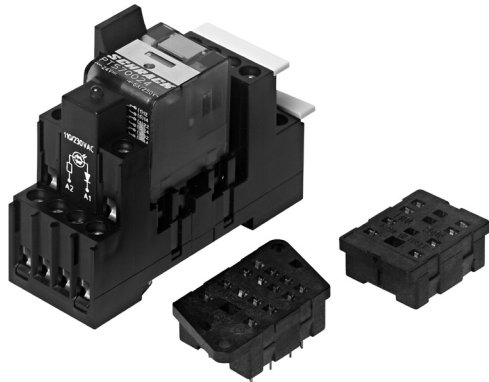


## Accessories Miniature Relay PT

and similar design: relay heights 29 / 34.6 / 35.2 / 36.6 / 37.6mm



F0233-A

### Features

- Easy replacement of relays on a densely packed DIN rail
- High quality rising clamp terminals
- Captive combination terminal screws
- No reduction of protection class or creepage/clearance with plastic retainer
- Simple plug-in indicator- and protection modules
- White snap-on tags

### Accessories for sockets:

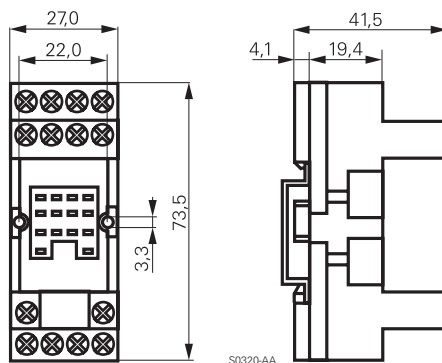
- Retaining clip
- LED- and protection modules
- Marking tags

Dimensions in mm

## PT DIN-rail socket with screw type terminals



F0234-A



S0320-AA



### Technical data

|   |   |      |
|---|---|------|
| Rated current                               | 4-pole                                      | 6 A  |
|   | 3-pole                                      | 10 A |
|   | 2-pole                                      | 12 A |
| Rated voltage                               | 250 Vac                                     |      |
| Insulation cat. (VDE 0110b)                 | C / 250 Vac                                 |      |
| Ambient temperature                         | -45...+70 °C                                |      |
| Protection category                         | IP 20                                       |      |
| Protection against accidental contact meets | VBG 4                                       |      |
| Wire cross section                          | 2 x 2.5 mm <sup>2</sup>                     |      |
|   | with bootlace crimp 2 x 1.5 mm <sup>2</sup> |      |
| Terminal torque                             | 0.5 Nm                                      |      |
|   | max. 0.7 Nm                                 |      |
| Packaging unit                              | 50 pcs.                                     |      |

### DIN-rail socket with screw type terminals

Type

|                   |  |
|-------------------|--|
| <b>YPT 78 702</b> | DIN-rail socket with screw type terminals, 2 pole                                      |
| <b>YPT 78 703</b> | DIN-rail socket with screw type terminals, 3 pole                                      |
| <b>YPT 78 704</b> | DIN-rail socket with screw type terminals, 4 pole                                      |
| <b>YPT 78 110</b> | DIN-rail socket with screw type terminals, 4 pole package with protection diode module |

### Accessories for YPT 78 702, YPT 78 703, YPT 78 704, YPT 78 110

Type

|                   |                       |
|-------------------|-----------------------|
| <b>YPT 16 016</b> | Plastic clip PT, HC28 |
| <b>PT 28 800</b>  | Metal clip PT, HC28   |
| <b>YPT 16 040</b> | Marking tag           |

## LED- and Protection Modules for YPT 78 702, 78 703, 78 704, 78 110

Easy insertion of module into the socket

Wiring in parallel to the coil

Type

|                  |  |
|------------------|--|
| <b>YMGD 230</b>  | Protection diode (A1+, A2-), 6/230 VDC |
| <b>YMRCW 024</b> | RC-network 6...60 Vac                  |
| <b>YMRCW 230</b> | RC-network 110...230 Vac               |
| <b>YMAV 024</b>  | Varistor 24 Vac                        |
| <b>YMAV 230</b>  | Varistor 230 Vac                       |

| LED red            |                  | LED green                                |  |
|--------------------|------------------|--|--|
| <b>YMLRA 024</b>   | <b>YMLGA 024</b> | LED 6...24 Vdc/Vac                       |  |
| <b>YMLRD 024-A</b> | <b>YMLGD 024</b> | LED 6...24 Vdc w. prot.diode (A1+, A2-)  |  |
| <b>YMLRD 024</b>   |                  | LED 6...24 Vdc w. prot. diode (A1-, A2+) |  |
| <b>YMLRW 230</b>   | <b>YMLGW 230</b> | LED 110...230 Vac                        |  |

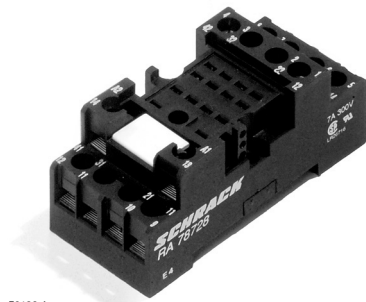


F0231-A



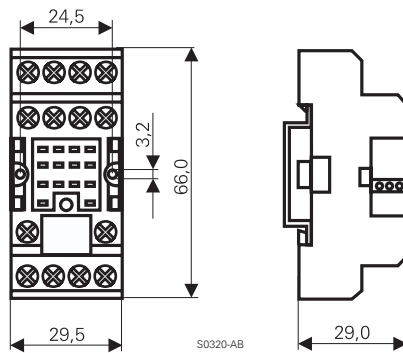
F0232-A

## RA 78 728 DIN rail socket with screw-type terminals, 4 pole



F0139-A

Retaining clip PT 28 800



Dimensions in mm



### Technical data

|   |                         |
|---|-------------------------|
| Rated current                               | 7 A                     |
| Rated voltage                               | 250 Vac                 |
| Dielectric strength coil/cont.              | >3000 V <sub>rms</sub>  |
| Insulation cat. (VDE 0110b)                 | C / 250 Vac             |
| Ambient temperature                         | -45...+70 °C            |
| Protection category                         | IP 20                   |
| Protection against accidental contact meets | VBG 4                   |
| Wire cross section                          | 2 x 2.5 mm <sup>2</sup> |
| with bootlace crimp                         | 2 x 1.5 mm <sup>2</sup> |
| Terminal torque                             | 0.5 Nm                  |
| max.  | 0.7 Nm                  |
| Packaging unit                              | 25 pcs.                 |

## Accessories Miniature Relay PT

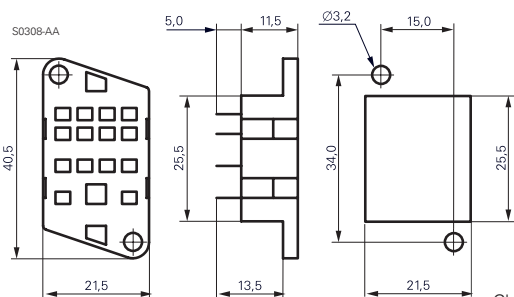
and similar design: relay heights 29 / 34.6 / 35.2 / 36.6 / 37.6mm

Dimensions in mm  
View on solder pins

**PT 78 600** Socket with solder terminals, 4 pole



F0132-A



Chassis cut-out

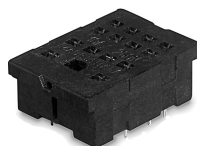
### Technical data

|                                |                        |
|--------------------------------|------------------------|
| Rated current                  | 10 A                   |
| Rated voltage                  | 250 Vac                |
| Dielectric strength coil/cont. | >1500 V <sub>rms</sub> |
| Ambient temperature            | -40...+70 °C           |
| Packaging unit                 | 25 pcs.                |

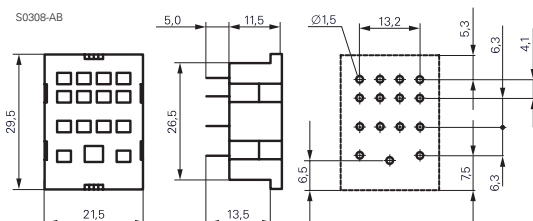
**PT 78 604** 4 pole Socket with PCB terminals

**PT 78 603** 3 pole

**PT 78 602** 2 pole



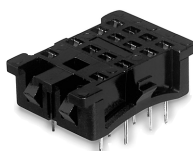
F0133-A



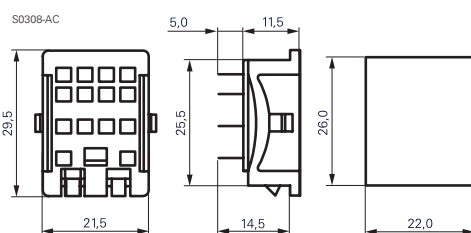
### Technical data

|                                |                        |
|--------------------------------|------------------------|
| Rated current                  | 10 A                   |
| Rated voltage                  | 250 Vac                |
| Dielectric strength coil/cont. | >1500 V <sub>rms</sub> |
| Ambient temperature            | -40...+70 °C           |
| Packaging unit                 | 25 pcs.                |

**PT 78 601** Socket with solder terminals, 4 pole



F0134-A



Chassis cut-out

### Technical data

|                                |                        |
|--------------------------------|------------------------|
| Rated current                  | 10 A                   |
| Rated voltage                  | 250 Vac                |
| Dielectric strength coil/cont. | >1500 V <sub>rms</sub> |
| Ambient temperature            | -40...+70 °C           |
| Packaging unit                 | 25 pcs.                |

### PT sockets

|                  |                                      |
|------------------|--------------------------------------|
| Type             |                                      |
| <b>PT 78 600</b> | Socket with solder terminals, 4 pole |
| <b>PT 78 602</b> | Socket with PCB terminals, 2 pole    |
| <b>PT 78 603</b> | Socket with PCB terminals, 3 pole    |
| <b>PT 78 604</b> | Socket with PCB terminals, 4 pole    |
| <b>PT 78 601</b> | Socket with solder terminals, 4 pole |

### Accessories for PT 78 600, PT 78 601, PT 78 602, PT 78 603, PT 78 604

|                  |   |
|------------------|---|
| Type             |   |
| <b>PT 28 802</b> | Metal retaining clip PT, relay height 29 mm |
| <b>ZG 28 800</b> | Metal retaining clip, relay height 36 mm    |