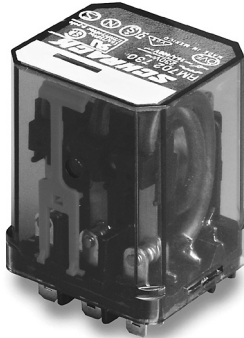


Power Relay RM 2/3/7

2 / 3 pole 10 / 16 A, DC- or AC-coil



F0163-A

Features

- 2 C/O or 3 C/O contacts
- Switching capacity up to 6000 VA
- DC- or AC-coil
- Mechanical indicator
- Push-to-test-button
- Plug-in version, PCB terminals, chassis- or DIN-rail mount

Applications

Elevator control, power supplies



Technical data of approved types on request

Contact data	RM 2	RM 3	RM 7
Configuration	2 C/O	3 C/O	3 C/O
Type of contact	single contact		
Rated current	16 A	10 A	16 A
Rated voltage / max.breaking voltage AC	380 Vac / 440 Vac		
Maximum breaking capacity AC	6000 VA	3800 VA	6000 VA
Make current	40 A	40 A	40 A
Contact material	AgCdO		

Contact ratings

Type	Load	Standard
RM2	1hp, 240 Vac, per contact	UL 508
RM7	1.5hp, 240 Vac, 3-phase	UL 508
RM7	15 A, 250 Vac, per contact	UL 508
RM3	1 / 2hp, 240 Vac, per contact	UL 508
RM3	10 A, 240 Vac, per contact	UL 508

Coil data		RM 2	RM 3	RM 7
Nominal voltage	DC coil		6...220 Vdc	
	AC coil		6...400 Vac	
Nominal coil power	DC coil	1.2 W	1.2 W	1.6 W
	AC coil	2.3 VA	2.3 VA	2.8 VA

Coil versions, DC-coil, RM2, RM3

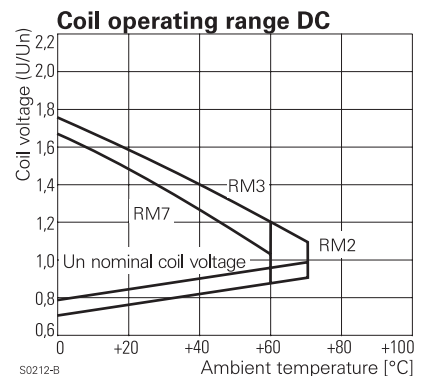
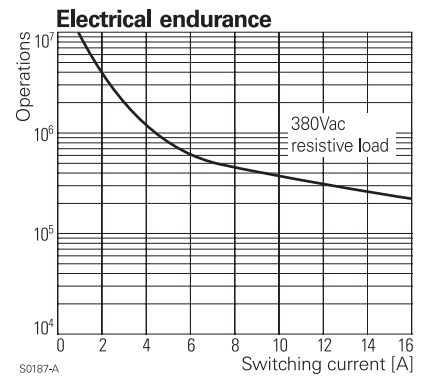
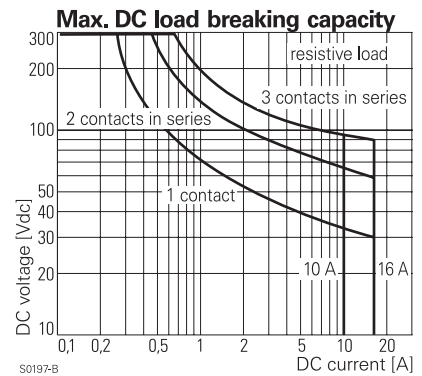
Coil code	Nominal voltage	Pull-in voltage	Release voltage	Coil resistance	Coil current		
STD	LED	PD*	LED	LED	PD*		
bipolar	LA6	LA6	Vdc	Vdc	Vdc		
006	L06	0A6	6	4.5	0.6	32±10%	187.5
012	L12	0B2	12	9.0	1.2	110±10%	109.1
024	L24	0C4	24	18.0	2.4	475±10%	50.5
048	L48	0E8	48	36.0	4.8	2000±10%	24.0
060	L60	0G0	60	45.0	6.0	2850±10%	21.1
110	M10	1B0	110	82.5	11.0	10000±12%	11.0
221	N21	2C1	220	165.0	22.0	40000±15%	5.5

Coil versions, DC-coil, RM7

Coil code	Nominal voltage	Pull-in voltage	Release voltage	Coil resistance	Coil current		
006	L06	0A6	6	4.5	0.6	24±10%	250.0
012	L12	0B2	12	9.0	1.2	86±10%	139.5
024	L24	0C4	24	18.0	2.4	345±10%	69.6
048	L48	0E8	48	36.0	4.8	1340±10%	35.8
060	L60	0G0	60	45.0	6.0	2200±10%	27.3
110	M10	1B0	110	82.5	11.0	7300±10%	15.1
221	N21	2C1	220	165.0	22.0	30000±15%	7.3

All figures are given for coil without preenergization, at ambient temperature +20 °C

* Protection diode PD; standard polarity: +A1 / -A2



Power Relay RM 2/3/7

2 / 3 pole 10 / 16 A, DC- or AC-coil

Coil versions, AC-coil, RM2, RM3

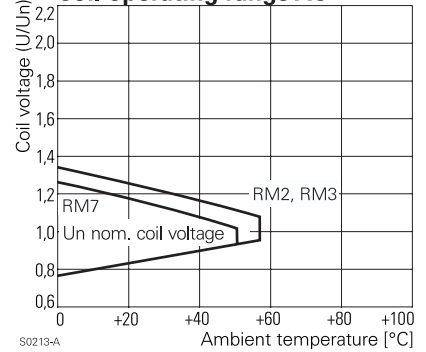
Coil code	LED	Nominal voltage Vac	Pull-in voltage Vac	Release voltage Vac	Coil resistance Ω	Coil current mA
506	R06	6	4.8	2.4	5.3±10%	381.7
512	R12	12	9.6	4.8	24±10%	182.5
524	R24	24	19.2	9.6	86±10%	94.2
548	R48	48	38.4	19.2	345±10%	47.5
560	R60	60	48.0	24.0	544±10%	37.8
615	S15	115	92.0	46.0	2000±10%	20.6
730	T30	230	184.0	92.0	8300±12%	10.1
900	V00	400	320.0	160.0	27500±15%	5.8

Coil versions, AC-coil, RM2, RM3

506	R06	6	4.8	2.4	4.7±10%	476.7
512	R12	12	9.6	4.8	19.5±10%	225.8
524	R24	24	19.2	9.6	80±10%	109.2
548	R48	48	38.4	19.2	320±10%	54.2
560	R60	60	48.0	24.0	500±10%	43.7
615	S15	115	92.0	46.0	1850±10%	23.0
730	T30	230	184.0	92.0	7500±10%	11.7
900	V00	400	320.0	160.0	23500±15%	6.5

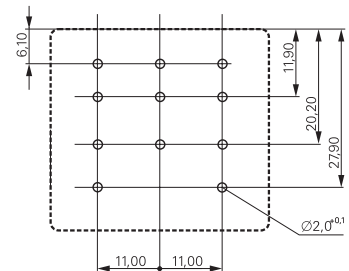
All figures are given for coil without preenergization, at ambient temperature +20 °C

Coil operating range AC



PCB layout / terminal assignment

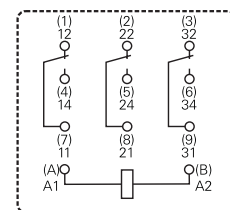
View on solder pins
Dimensions in mm



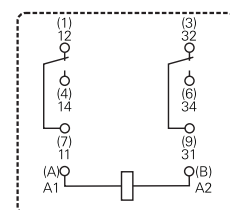
Insulation

Dielectric strength	coil-contacts	2500 V _{rms}
	open contact circuit	1500 V _{rms}
	adjacent contacts	2500 V _{rms}
Clearance / creepage	≥ 3.5 / 6 mm	
Insulation to VDE 0110b (2/79)	Insulation category / reference voltage C / 400 with fully isolated Faston connectors	

3 C/O contacts



2 C/O contacts



Other data

	RM 2	RM 3	RM 7
Ambient temperature DC-coil	-45...+70 °C	-45...+60 °C	-45...+60 °C
Ambient temperature AC-coil	-45...+55 °C	-45...+55 °C	-45...+50 °C
Mechanical life	>20x10 ⁶ operations		
Max. switching rate at rated- / minimum load	16 min ⁻¹ / 100 min ⁻¹		
Operate- / release time	approx. 15 / 10 ms		
Bounce time	approx. 3 ms		
Vibration resistance N/O / N/C contact	>5 / 2 g	>5 / 2 g	>12 / 4 g
Category of protection (IEC 61810)	RT I - dust protected		
Relay weight	81 g		
Packaging unit	10 / 25 pcs.		
Accessories	see accessories RM		

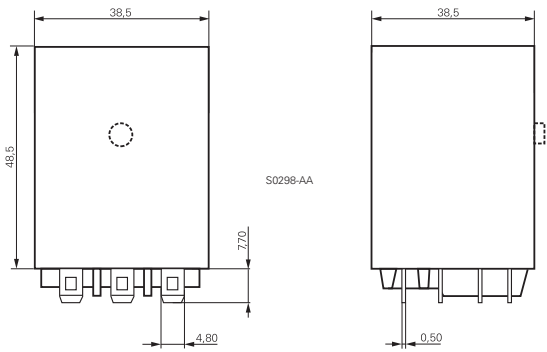
Power Relay RM 2/3/7

2 / 3 pole 10 / 16 A, DC- or AC-coil

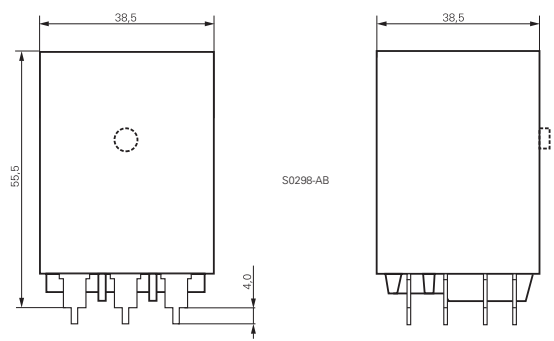
Dimensions

Dimensions in mm

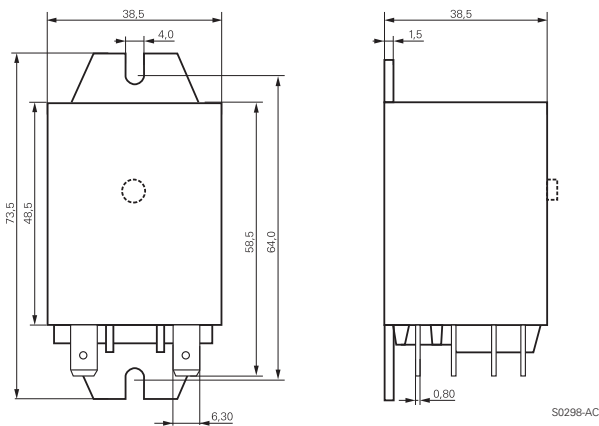
Plain cover, plug-in version



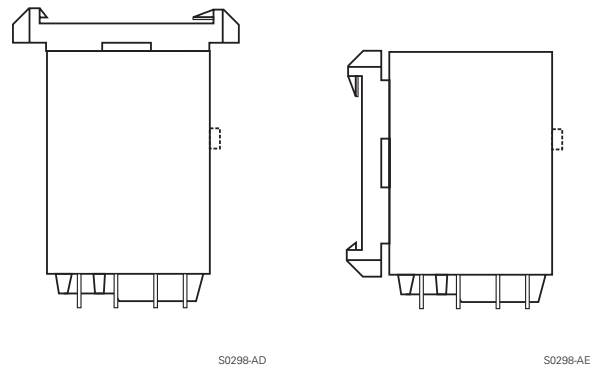
PCB version



Cover with mounting brackets, FASTON 250 (187 available)



Cover with DIN-snap-on attachment (FASTON 250 only)
horizontal vertical



Product key

Type

Contacts

2 2 C/O contacts, 16 A **7** 3 C/O contacts, 16 A
3 3 C/O contacts, 10 A

Version

0 without test button **3** with test button

Enclosure

2 plain cover, AMP-Faston 187
3 cover with mounting brackets, AMP-Faston 187
5 cover with mounting brackets, AMP-Faston 250
7 PCB version
8 cover with DIN-snap-on attachment, horizontal, AMP-Faston 250
9 cover with DIN-snap-on attachment, vertical, AMP-Faston 250

Coil

Coil code: please refer to coil versions table, preferred types in bold print

AMP-Faston 187 = 4.8 x 0.5 mm AMP-Faston 250 = 6.3 x 0.8 mm



Rights to change data / design reserved