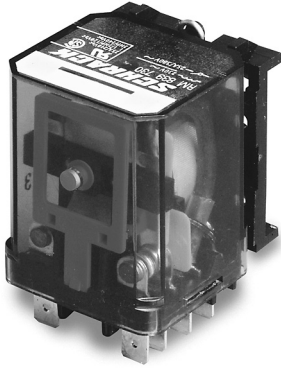


## Power Relay RM 8

2 pole 25 A, DC- or AC-coil



F0165-A

### Features

- 2 C/O contacts
- DC- or AC-coil
- Mechanical indicator
- Push-to-test-button
- Chassis- or DIN-rail mount

### Applications

Cleaning equipment, heating and cooling equipment



Technical data of approved types on request

### Contact data

Configuration	2 C/O contact
Type of contact	single contact
Rated current	25 A
Rated voltage / max. breaking voltage AC	250 Vac / 440 Vac
Maximum breaking capacity AC	6000 VA
Make current (max. 4 s at duty cycle 10%)	60 A
Contact material	AgCdO

### Contact ratings

Type	Load	Standard
RM8	2hp, 240 Vac, per contact	UL 508
RM8	1.5hp, 120 Vac, per contact	UL 508
RM8	25 A, 240 Vac, per contact	UL 508

### Coil data

Nominal voltage	DC coil	6...220 Vdc
	AC coil	6...400 Vac
Nominal coil power	DC coil	1.2 W
	AC coil	2.8 VA

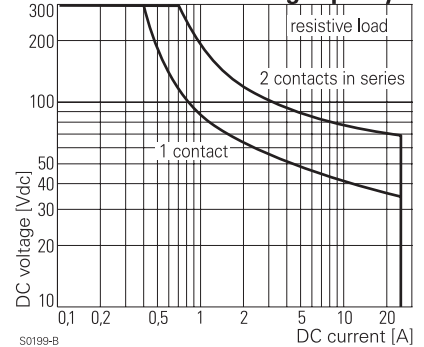
### Coil versions, DC-coil, RM8

Coil code	LED	PD*	LED	Nominal voltage	Pull-in voltage	Release voltage	Coil resistance	Coil current
STD	bipolar		PD*	Vdc	Vdc	Vdc	$\Omega$	mA
006	L06	0A6	LA6	6	4.5	0.6	32±10%	187.5
012	L12	0B2	LB2	12	9.0	1.2	110±10%	109.1
<b>024</b>	<b>L24</b>	<b>0C4</b>	<b>LC4</b>	<b>24</b>	<b>18.0</b>	<b>2.4</b>	<b>475±10%</b>	<b>50.5</b>
048	L48	0E8	LE8	48	36.0	4.8	2000±10%	24.0
060	L60	0G0	LG0	60	45.0	6.0	2850±10%	21.1
110	M10	1B0	MB0	110	82.5	11.0	10000±12%	11.0
221	N21	2C1	NC1	220	165.0	22.0	40000±15%	5.5

All figures are given for coil without preenergization, at ambient temperature +20 °C

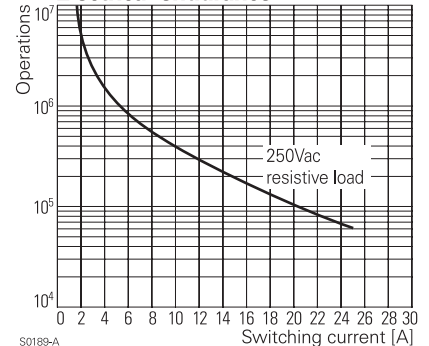
\* Protection diode PD; standard polarity: +A1 / -A2

### Max. DC load breaking capacity



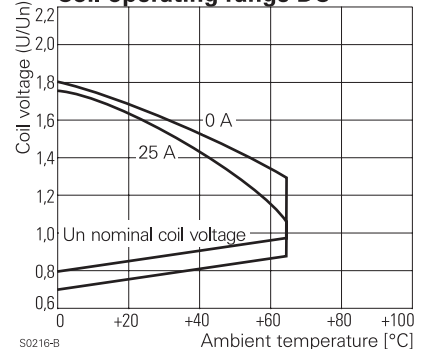
S0199-B

### Electrical endurance



S0189-A

### Coil operating range DC



S0216-B

## Power Relay RM 8

2 pole 25 A, DC- or AC-coil

### Coil versions, AC-coil, RM8

Coil code	LED	Nominal voltage Vac	Pull-in voltage Vac	Release voltage Vac	Coil resistance $\Omega$	Coil current mA
506	R06	6	4.8	2.4	4.7 $\pm$ 10%	476.7
512	R12	12	9.6	4.8	19.5 $\pm$ 10%	225.8
<b>524</b>	<b>R24</b>	<b>24</b>	<b>19.2</b>	<b>9.6</b>	<b>80<math>\pm</math>10%</b>	<b>109.2</b>
548	R48	48	38.4	19.2	320 $\pm$ 10%	54.2
560	R60	60	48.0	24.0	500 $\pm$ 10%	43.7
615	S15	115	92.0	46.0	1850 $\pm$ 10%	23.0
<b>730</b>	<b>T30</b>	<b>230</b>	<b>184.0</b>	<b>92.0</b>	<b>7500<math>\pm</math>10%</b>	<b>11.7</b>
900	V00	400	320.0	160.0	23500 $\pm$ 15%	6.5

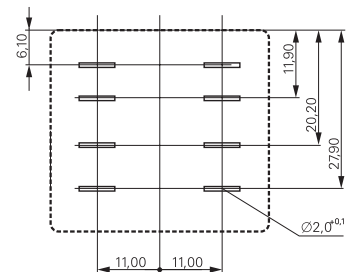
All figures are given for coil without preenergization, at ambient temperature +20 °C

### Insulation

Dielectric strength	coil-contacts	2500 V <sub>rms</sub>
	open contact circuit	1500 V <sub>rms</sub>
	adjacent contacts	4000 V <sub>rms</sub>
Clearance / creepage	$\geq 2.8 / 4$ mm	
Insulation to VDE 0110b (2/79)		
Insulation category / reference voltage		C / 250

### Terminal assignment

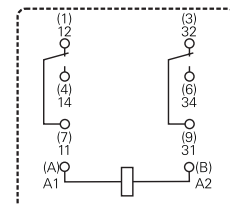
View on solder pins  
Dimensions in mm



S0269-AG

### Other data

Ambient temperature	DC-coil	-45...+65 °C
	AC-coil	-45...+40 °C
Mechanical life	>10x10 <sup>6</sup> operations	
Max. switching rate at rated- / minimum load	16 min <sup>-1</sup> / 100 min <sup>-1</sup>	
Operate- / release time	approx. 15 / 15 ms	
Bounce time	approx. 3 ms	
Vibration resistance N/O / N/C contact	>10 / 5 g, 30...150 Hz	
Category of protection (IEC 61810)	RT 1 - dust protected	
Relay weight	81 g	
Packaging unit	10 / 25 pcs.	



S0269-AD

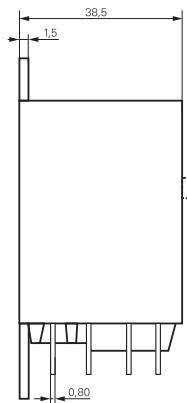
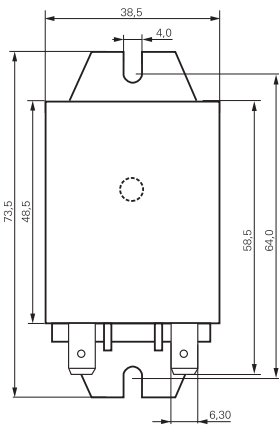
## Power Relay RM 8

2 pole 25 A, DC- or AC-coil

### Dimensions

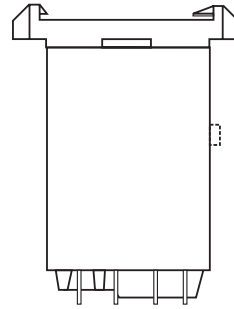
Dimensions in mm

Cover with mounting brackets, FASTON 250



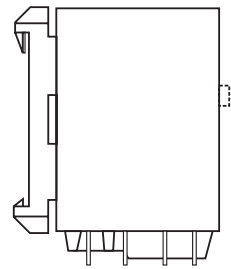
S0298-AC

Cover with DIN-snap-on attachment  
horizontal



S0298-AD

vertical



S0298-AE

### Product key

Type	<b>R</b>	<b>M</b>	<b>8</b>				
Contacts	8 2 C/O contacts, 25 A						
Version	0 without test button		3 with test button				
Mounting	5 cover with mounting brackets, AMP-Faston 250		8 cover with DIN-snap-on attachment, horizontal, AMP-Faston 250		9 cover with DIN-snap-on attachment, vertical, AMP-Faston 250		
Coil	Coil code: please refer to coil versions table, preferred types in bold print						
AMP-Faston 250 = 6.3 x 0.8 mm							

Rights to change data / design reserved