

## Power Relay RM C/D

1 pole 30 A, DC- or AC-coil



F0166-A

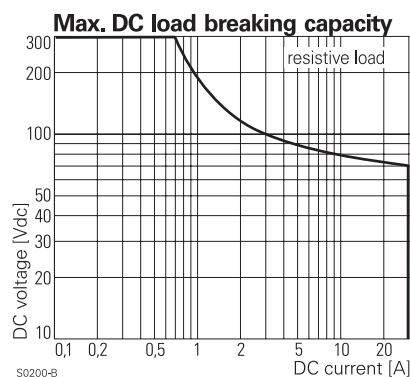
### Features

- 1 N/O or 1 N/O + 1 N/C contact
- Switching capacity up to 7200 VA
- DC- or AC-coil
- Push-to-test-button
- Chassis mount

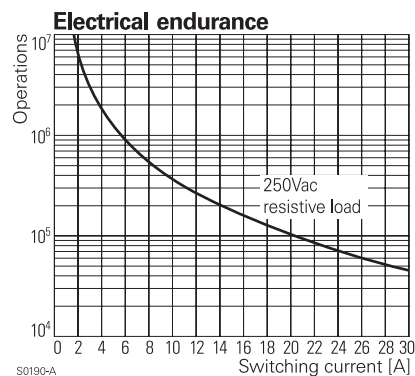
### Applications

Battery chargers, heating control

Contact data	RMC	RMD
Configuration	1 N/O and 1N/C	1 N/O
Type of contact	single contact, bridging contact	
Rated current	30 A	
Rated voltage / max.breaking voltage AC	250 Vac / 380 Vac / 440 Vac	
Maximum breaking capacity AC	7500 VA	
Make current (max. 4 s at duty cycle 10%)	60 A	
Contact material	AgCdO	



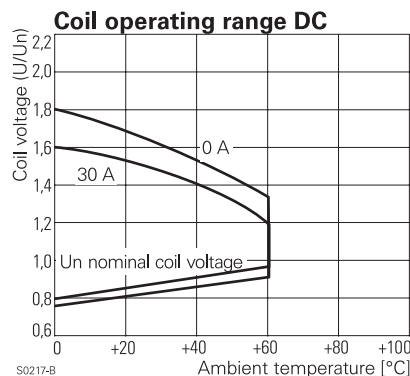
Coil data		
Nominal voltage	DC coil	6...220 Vdc
	AC coil	6...400 Vac
Nominal coil power	DC coil	1.2 W
	AC coil	2.8 VA



Coil versions, DC-coil, RMC, RMD								
Coil code	LED	PD*	LED	Nominal	Pull-in	Release	Coil	Coil
STD	bipolar		PD*	voltage	voltage	voltage	resistance	current
				Vdc	Vdc	Vdc	Ω	mA
006	L06	0A6	LA6	6	4.5	0.6	32±10%	187.5
012	L12	0B2	LB2	12	9.0	1.2	110±10%	109.1
<b>024</b>	<b>L24</b>	<b>0C4</b>	<b>LC4</b>	<b>24</b>	<b>18.0</b>	<b>2.4</b>	<b>475±10%</b>	<b>50.5</b>
048	L48	0E8	LE8	48	36.0	4.8	2000±10%	24.0
060	L60	0G0	LG0	60	45.0	6.0	2850±10%	21.1
110	M10	1B0	MB0	110	82.5	11.0	10000±12%	11.0
221	N21	2C1	NC1	220	165.0	22.0	40000±15%	5.5

All figures are given for coil without preenergization, at ambient temperature +20 °C

\* Protection diode PD; standard polarity: +A1 / -A2



## Power Relay RM C/D

1 pole 30 A, DC- or AC-coil

### Coil versions, AC-coil, RMC, RMD

Coil code	LED	Nominal voltage Vac	Pull-in voltage Vac	Release voltage Vac	Coil resistance $\Omega$	Coil current mA
<b>524</b>	<b>R24</b>	<b>24</b>	<b>19.2</b>	<b>9.6</b>	<b>80±10%</b>	<b>109.2</b>
548	R48	48	38.4	19.2	320±10%	54.2
560	R60	60	48.0	24.0	500±10%	43.7
615	S15	115	92.0	46.0	1850±10%	23.0
<b>730</b>	<b>T30</b>	<b>230</b>	<b>184.0</b>	<b>92.0</b>	<b>7500±10%</b>	<b>11.7</b>
900	V00	400	320.0	160.0	23500±15%	6.5

All figures are given for coil without preenergization, at ambient temperature +20 °C

### Insulation

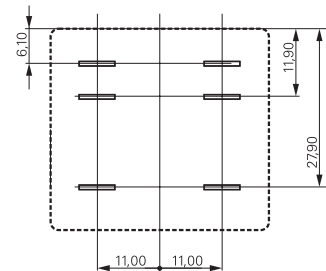
Dielectric strength	coil-contacts	2500 V <sub>rms</sub>
	open contact circuit	1500 V <sub>rms</sub>
	adjacent contacts	4000 V <sub>rms</sub>
Clearance / creepage		≥ 2.8 / 4 mm
Insulation to VDE 0110b (2/79)		
Insulation category / reference voltage		C / 250

### Other data

Ambient temperature	DC-coil	-45...+60 °C
	AC-coil	-45...+40 °C
Mechanical life		>10x10 <sup>6</sup> operations
Max. switching rate at rated- / minimum load		16 min <sup>-1</sup> / 100 min <sup>-1</sup>
Operate- / release time		approx. 17 / 18 ms
Bounce time		approx. 4 ms
Vibration resistance N/O / N/C contact		>10 / 5 g, 30...150 Hz
Category of protection (IEC 61810)		RT 1 - dust protected
Relay weight		81 g
Packaging unit		10 pcs.

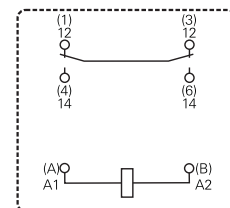
### Terminal assignment

View on solder pins  
Dimensions in mm



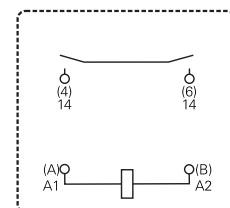
S0269-AK

1 N/O and 1 N/C contact, RMC



S0269-AH

1 N/O contact, RMD



S0269-AI

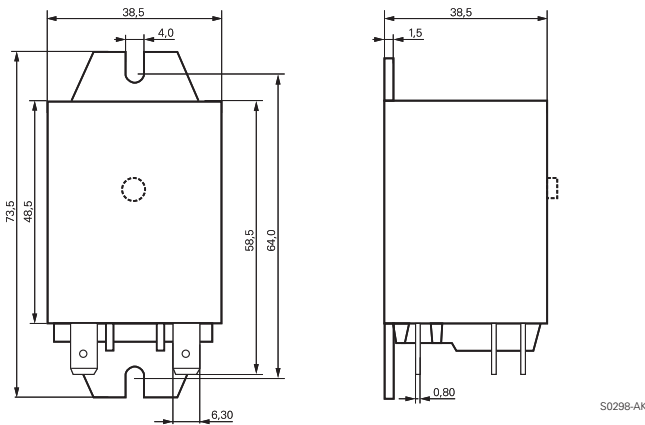
## Power Relay RM C/D

1 pole 30 A, DC- or AC-coil

### Dimensions

Dimensions in mm

Cover with mounting brackets, FASTON 250



### Product key

	<b>R</b>	<b>M</b>			<b>5</b>			
Type								
Contacts								
<b>C</b>	1 N/O contact and 1 N/C contact, 30 A							
<b>D</b>	1 N/O contact, 30 A							
Version								
<b>0</b>	without test button				<b>3</b> with test button			
Mounting								
<b>5</b>	cover with mounting brackets, AMP-Faston 250							
Coil								
Coil code: please refer to coil versions table, preferred types in bold print								

Rights to change data / design reserved

AMP-Faston 250 = 6.3 x 0.8 mm